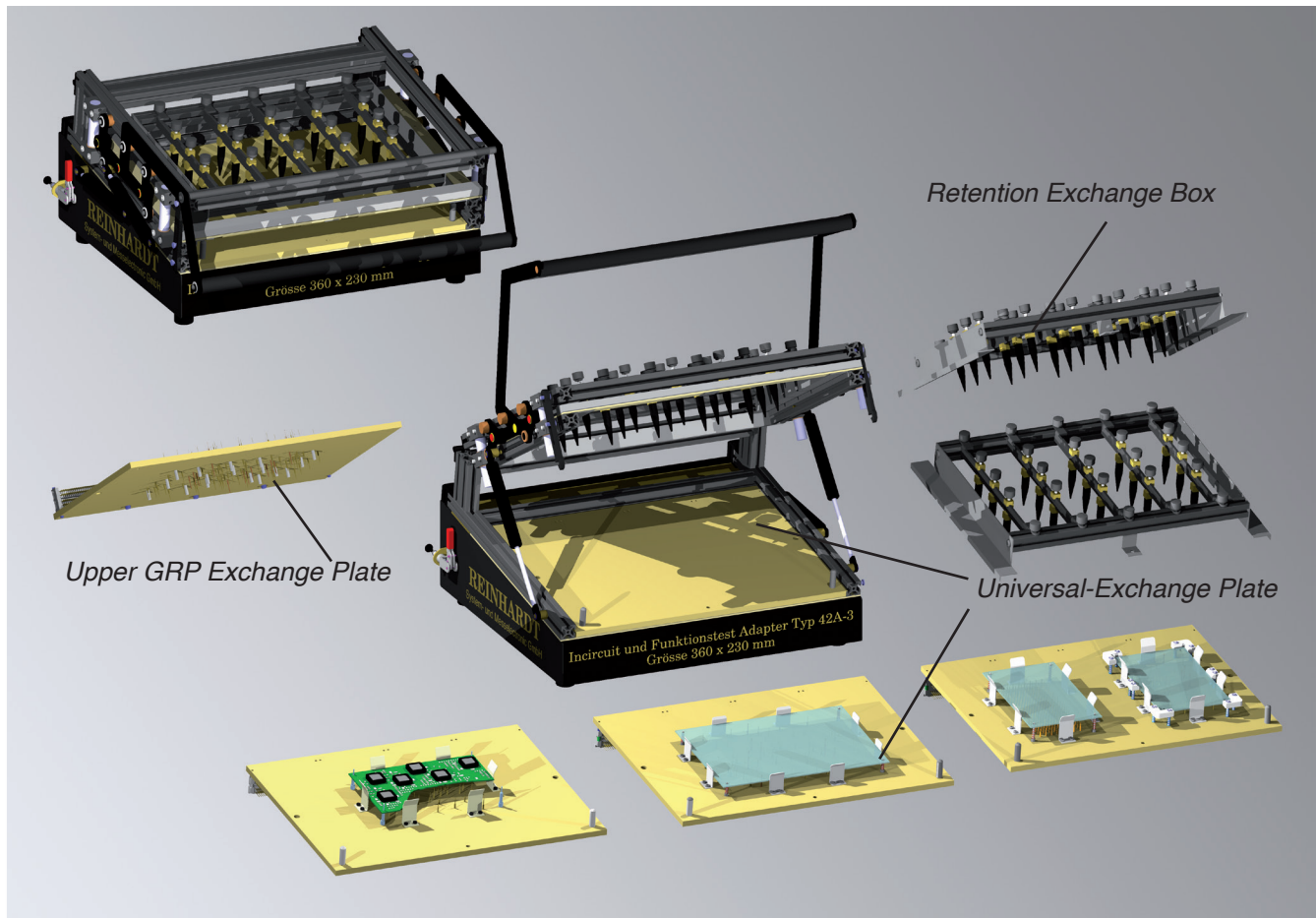


# REINHARDT

## System- und Messelectronic GmbH

### Accessories and Spare Parts for REINHARDT-Test Fixtures



#### Type 42 V2.0 Manual Fixture

Manual retention fixture with sloping working area, 4 linear guidings and hinged upper part (machine part), for more than 1,000 spring contact pins, exchangeable retention box incl. 15 retention pins mounted to 5 receiver rails, and exchange plate

The lower universal exchange plate is only inserted; the upper exchange plate can easily be exchanged for another exchange plate or for a retention box for polarity or IC-polarity test. The fixture can be opened while the upper part is closed for contacting the DUT so that you can reach the pin connection for measurement tasks with optimum access from below.

#### Technical Data:

Shift: 26 mm

Working area: 360x230 mm

Overall dimensions of the universal exchange plate 380x297x8 mm

Overall dimensions of the upper plate SMT Version 3.0: 380x297x8 mm

Maximum component height: with retention box 45 mm without pocket  
with upper plate: 15 mm without pocket

# Accessories and Spare Parts for REINHARDT-Test Fixtures



**Type 42C V1.0/670/770 Manual Desk Fixture** – This manual desk fixture with **sloping** working area is designed for an ATS-KMFT 670/ATS-MFT 770 with expansion rack. On the rear there are up to **two** (optional) REINHARDT-SR18VG-interfaces.

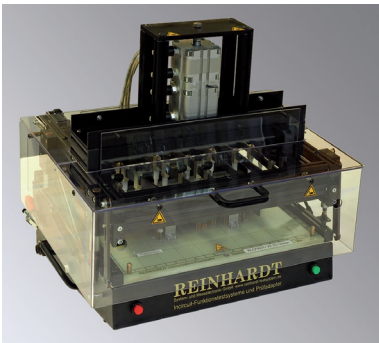
**Type 42C V1.0/670/770 Manual Desk Fixture** – This manual desk fixture with **sloping** working area is designed for an ATS-KMFT 670/ATS-MFT 770 without expansion rack. On the rear there is **one** REINHARDT-SR18VG-interface.

This fixture has 4 linear guidings, the upper part can be opened and has up to 2x18 multi-way connectors. The exchange retention box comes with 15 retention pins which are mounted to 5 receiver profiles.

Technical Data:

Working area: 360x230 mm

Maximum component height: with retention box 45 mm without pocket  
with upper exchange plate 15 mm without pocket



**Type 40A Pneumatic Fixture (Machine part)** – Type 40A desk fixture with sloping working area, for a maximum 1,000 standard spring contact pins, with power supply, two-stage retention (In-circuit and Function test), exchangeable retention box incl. 15 retention pins mounted to 5 receiver rails, freely adjustable pneumatic retention device and exchange plate

Technical Data:

Shift: In-circuit test: 20 mm, Functional test 13 mm

Compressed air, not lubricated, 6 bar, 5 Micron

Working area: 360x230 mm;

Overall dimensions of the universal exchange plate: 380x297x8 mm

Overall dimensions of the upper plate SMT Version 3.0: 380x297x8 mm

Maximum component height: with retention box 45 mm without pocket  
with upper plate: 15 mm without pocket



**Type 82C V2.0 Manual Desk Fixture** – This manual desk fixture with **sloping** working area is designed for an ATS-KMFT 670/ATS-MFT 770 with expansion rack. On the rear there are up to **two** (optional) REINHARDT-SR18VG-interfaces.

**Type 82B V2.0 Manual Desk Fixture** – This manual desk fixture with **horizontal** working area is designed for an ATS-KMFT 670/ATS-MFT 770 without expansion rack. On the rear there is **one** REINHARDT-SR18VG-interface.

This fixture has 4 linear guidings, the upper part can be opened. The exchange retention box comes with 18 retention pins which are mounted to 6 receiver profiles. Working area of the exchange plate is 480x320 mm.

Technical Data:

Working area: 480x320 mm

Maximum component height: with retention box 45 mm without pocket  
with upper exchange plate 15 mm without pocket

# Accessories and Spare Parts for REINHARDT-Test Fixtures



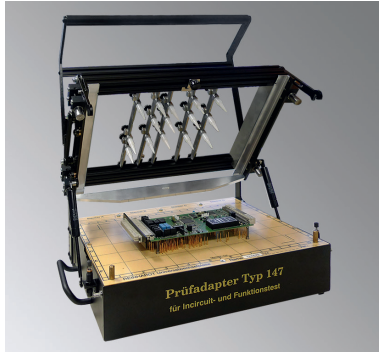
**Type 127 Manual Fixture** with horizontal working area and 4 linear guidings for max. 500 contact pins, working area 191.5 x 172 mm, overall dimensions 217.6 x 230 mm, with lower exchange plate incl. 2 96way interchange connectors (max. 8), retention exchange box with 4 rails and 12 retention pins

Technical Data:

Working area 191.5 x 172 mm

Overall dimensions of the plate 217.6 x 230 x 8 mm

Maximum component height: with retention box 45 mm without pocket  
with upper plate 15 mm without pocket



**Type 147 Manual Retention Fixture** with horizontal working area and 4 linear guidings, for max. 800 spring contact pins, with exchange plate incl. 4 96way interchange connectors (max. 8), retention exchange box with 5 receiver rails and 15 retention pins

Technical Data:

Working area 360 x 230 mm

Overall dimensions of the universal exchange plate GFK 380 x 297 x 8 mm

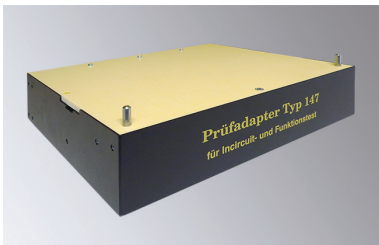
Maximum component height: with retention box 45 mm without pocket  
with upper plate 15 mm without pocket



**Desk Fixture Box**, incl. 4 connectors  
for KMFT 470/670/770 system family



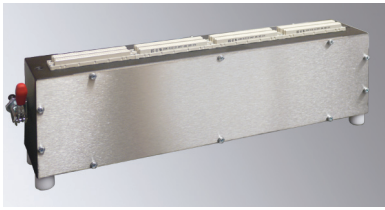
**Desk Fixture Box 127**, horizontal working area, with lower exchange plate, overall dimensions 217.6 x 230 mm, incl. 2 96way interchange connectors  
for ATS-UKMFT 627



**Desk Fixture Box 147**, horizontal working area, with lower exchange plate, overall dimensions 380 x 297 x 8 mm; incl. 4 96way interchange connectors  
for ATS-UKMFT 627

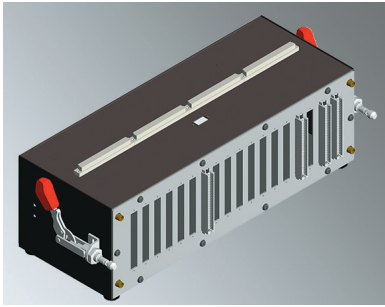


# Accessories and Spare Parts for REINHARDT-Test Fixtures



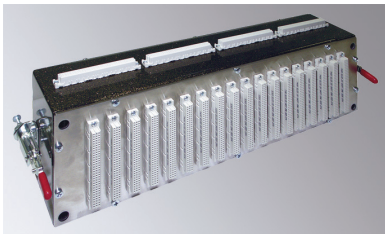
**Interface Box 85 mm** Universal interface box 85 mm deep, incl. 4 male multiway connectors and 4 female multiway connectors (64pol., top), one side REINHARDT-interface 18 VG; the blank panel on the opposite side accommodates special connectors of the customer for system family ATS-KMFT 470, ATS-KMFT 670 and ATS-MFT 770

Front



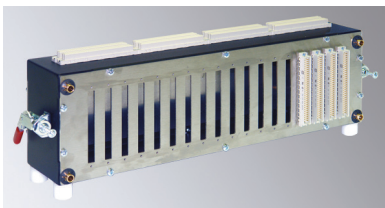
**Interface Box 165 mm deep**, incl. 4 male multiway connectors and 4 female multiway connectors (64pol., top), one side REINHARDT-interface 18 VG, opposite side blank panel for system family ATS-KMFT 470, ATS-KMFT 670 and ATS-MFT 770

Rear



**Converter and Ranging Box 85 mm** with interface on both sides, incl. 8 male connectors and 16 female connectors, 8 of them are on top of the unit (64pol.) for connecting a REINHARDT-universal fixture for ATS-ICT 450, ATS-MFT 500 or ATS-MFT 480 to ATS-KMFT 670/ATS-MFT 770

Front



**Converter and Ranging Box 165 mm**, ca. 165 mm deep, with interface on both sides, incl. 8 male connectors and 12 female connectors, 4 of them are on top of the unit (96pol.) for connecting a REINHARDT-universal fixture for ATS-ICT 450, ATS-MFT 500 or ATS-MFT 480 to ATS-KMFT 670/ATS-MFT 770

Rear

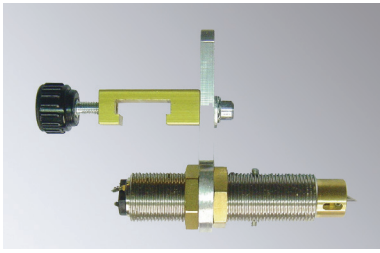


**Dockingbox ADA127**, one side interface with 8 female connectors, 96-way, opposite side blank pane for user-specific connectors incl. 2 mounted grips for push rod for easy docking to fixture type 127 or type 147  
Dimensions: Basic rack about 165 mm deep, about 230 mm wide (without grips for push rod) and about 145 mm high

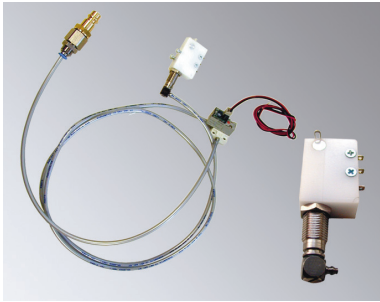
without test fixture



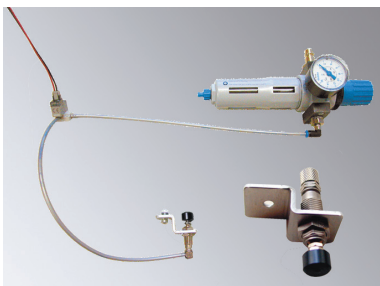
# Accessories and Spare Parts for REINHARDT-Test Fixtures



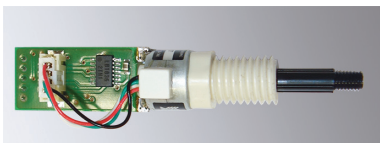
**Electric Circle Marker** The electric circle marker engraves a circle of 2 mm diameter into the PCB. It requires 6–12 VDC for control. With a fixing angle the circle marker can be secured at the retention exchange box for REINHARDT-fixtures.



**AKK 4.0 Pneumatic Cable Clamp** with 24 VDC magnetic valve, cable cross sectional area 0.14 mm<sup>2</sup> to 4 mm<sup>2</sup>, compressed air 6 bar, dimensions without magnetic valve: 14 mm wide, 27 mm high, 57 mm long, ca. 250 mm compressed air hose, 4 mm diameter, and connector plug Festo KS-1/4-S



**Pneumatic Actuator 15N with Pressure Regulator** Pneumatic actuator 15–20 N with 10 mm shift and 3/2 way valve, 24 V, incl. supply connector, 500 mm compressed air hose, compressed air 6 bar, pressure regulator and connector plug Festo KS-1/4-S, incl. fixing angle for securing it at the retention exchange box for REINHARDT-fixtures



**Electronic Actuator M12** for operating keys and switches with 12.7 mm shift (programmable in 180 steps), compression force 6 N, I<sup>2</sup>C-Bus controlled; connection pins 5V, SCL, SDA, MCLR and GND, codeable addresses: 48, 50, 52, 54; for mounting into the test fixture



**Pneumatic Contact Pin** for mounting into the fixture, outer diameter without receptacle 3 mm, 5.5 mm in state of rest, working height 12 mm, incl. clamp socket with soldering terminal and push-on receptacle, without magnetic valve, no compressed air feed, max. operating pressure 6 bar



**Spring Switch Contact Pin** incl. receptacle, outer diameter incl. receptacle 1.7 mm

# Accessories and Spare Parts for REINHARDT-Test Fixtures

---

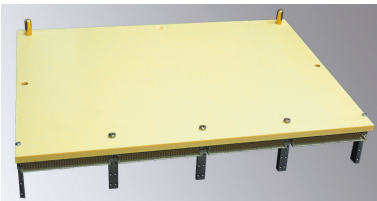
50 pcs high-quality spring contacts **100 mil tip**, 2N, already in wire wrap receptacles, oriented in one direction in a plastic box, for fast loading of the feeder



50 pcs high-quality spring contacts **100 mil crown**, 2N, already in wire wrap receptacles, oriented in one direction in a plastic box, for fast loading of the feeder

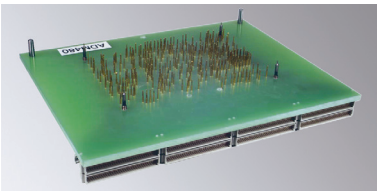
50 pcs high-quality spring contacts **75 mil tip**, 2N, already in wire wrap receptacles, oriented in one direction in a plastic box, for fast loading of the feeder

50 pcs high-quality spring contacts **75 mil crown**, 2N, already in wire wrap receptacles, oriented in one direction in a plastic box, for fast loading of the feeder



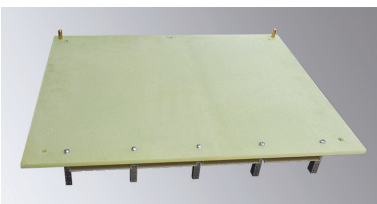
---

**Exchange Fixture Plate CEM1** for universal fixture, overall dimensions of the plate 380x297x8 mm, working area 360x230 mm, incl. 1 64way male connector type R with protective board Press\_Pla and 3 96way male connectors type R with protective board Press\_Pla, with 5 connector fastener blocks Vers. 2 and fittings. The exchange plate can hold test pins (up to 300) and connectors; incl. acrylic needle cover  
For fixtures Type 10, Type 15-p, Type 30, Type 32, Type 40, Type 42, Type 42A, Type 45A, Type 145B and Type 62



---

**Exchange Fixture Plate FR4** for universal fixture, overall dimensions of the plate 380x297x8 mm, working area 360x230 mm, incl. 1 64way male connector type R with protective board Press\_Pla and 3 96way male connectors type R with protective board Press\_Pla, with 5 connector fastener blocks Vers. 2 and fittings. The exchange plate can hold more than 300 test pins and connectors; incl. acrylic needle cover  
For fixtures Type 10, Type 15-p, Type 30, Type 32, Type 40, Type 42, Type 42A, Type 45A, Type 145B and Type 62

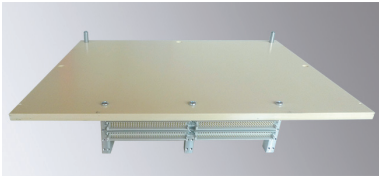


---

**Exchange Fixture Plate 82 FR4** for fixture Type 82, overall dimensions of the plate 500x400x8 mm, working area 480x320 mm, incl. 4 96way male connectors type R with protective board Press\_Pla, with 5 connector fastener blocks Vers. 2 and fittings. The exchange plate can hold more than 300 test pins and connectors.

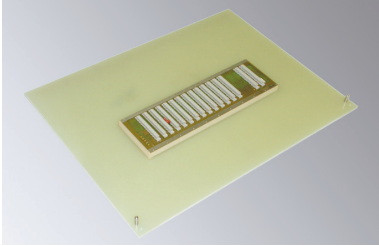
---

# Accessories and Spare Parts for REINHARDT-Test Fixtures

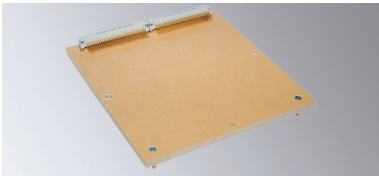


**Exchange Fixture Plate 147 CEM1** for fixture Type 147, overall dimensions of the plate 380x297x8 mm, working area 360x230 mm, incl. 4 connectors and fittings, incl. acrylic needle cover. The exchange plate can hold test pins (up to 300) and connectors.

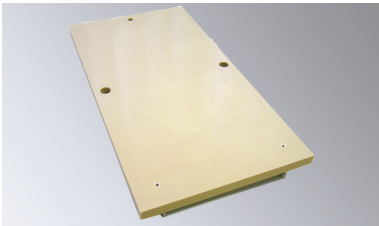
**Exchange Fixture Plate 147 FR4** for fixture Type 147, overall dimensions of the plate 380x297x8 mm, working area 360x230 mm, incl. 4 connectors and fittings, incl. acrylic needle cover. The exchange plate can hold test pins (more than 300) and connectors.



**Exchange Fixture Plate 52 FR4** for fixture Type 52 and 52L, overall dimensions of the plate 699x529x8 mm, working area 670x462 mm, incl. 4 connectors and fittings. The exchange plate can hold spring contact pins and connectors



**Exchange Fixture Plate 25/125/127 CEM1** for fixtures Type 25, 125, 127 and ATS-UKMFT 625, overall dimensions of the plate 217.6x230x8 mm, working area 191.5x172 mm, incl. 2 connectors and fittings, incl. acrylic needle cover. The exchange plate can hold spring contact pins and connectors.

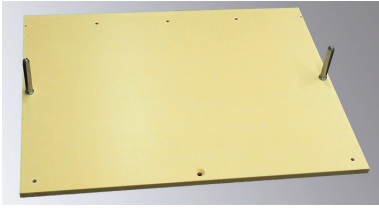


**Exchange Fixture Plate 105 CEM1** for fixture Type 105, overall dimensions of the plate 119x230x8 mm, working area 100x172 mm, incl. one 96pole connector. The exchange plate can hold spring contact pins (max. 200) and connectors.

**Exchange Fixture Plate 100 CEM1** for fixture Type 100, overall dimensions of the plate 104x134x8 mm, working area 95x95 mm, incl. one 64pole connector. The exchange plate can hold spring contact pins (max. 200) and connectors. **(no picture)**



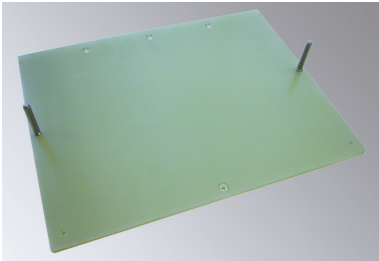
# Accessories and Spare Parts for REINHARDT-Test Fixtures



**Upper Plate SMT CEM1 V 3.0** (Picture on the left) exchange plate for Type 40A, Type 42A, Type 45A, Type 145B-2 and Type 62, overall dimensions 380x297 mm, for probes for unsoldered pins and/or polarity probes and for up to 300 spring contact pins, incl. 12 pcs plastic retention pins 17 mm and 2 collecting bolts with 2 flange bushings 8x12/16x8/2

**Upper Plate SMT 147 CEM1** for fixture Type 147, overall dimensions 380x297 mm, for probes for unsoldered pins and/or polarity probes and for up to 300 spring contact pins, incl. 12 pcs plastic retention pins 17 mm and 2 collecting bolts with 2 flange bushings 8x12/16x8/2 **(no picture)**

**Upper Plate SMT 82 FR4** for fixture Type 82, overall dimensions 500x400 mm, for probes for unsoldered pins and/or polarity probes and for more than 300 spring contact pins, incl. 30 pcs plastic retention pins 17 mm and 2 collecting bolts with 2 flange bushings 8x12/16x8/2

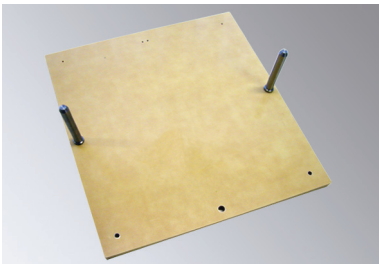


**Upper Plate SMT FR4 V 3.0** (Picture left) for Type 40A, Type 42A, Type 42B and Type 62, overall dimensions 380x297x8 mm, for probes for unsoldered pins and/or polarity probes and for more than 300 spring contact pins, incl. 12 pcs plastic retention pins 17 mm and 2 collecting bolts with 2 flange bushings 8x12/16x8/2

**Upper Plate SMT 147 FR4** for Type 147, overall dimensions 380x297 mm, for probes for unsoldered pins and/or polarity probes and for more than 300 spring contact pins, incl. 12 pieces plastic retention pins 17 mm and 2 collecting bolts with 2 flange bushings 8x12/16x8/2 **(no picture)**



**Upper Plate SMT 52 FR4, V 1.0**, for Type 52 and Type 52L, overall dimensions 699x489x8 mm, for probes for unsoldered pins and/or polarity probes, incl. 36 plastic retention pins 17 mm and 2 collecting bolts with 2 flange bushings 8x12/16x8/2

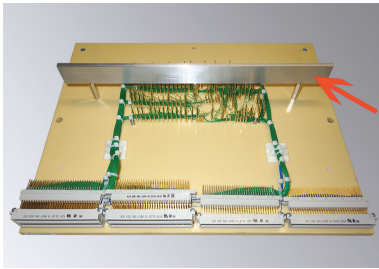


**Upper Plate SMT 125 CEM1** for fixture Type 125, Type 127 and ATS-UKMFT 625, overall dimensions 217.6x230x8 mm, for probes for unsoldered pins and/or polarity probes, incl. 12 pieces plastic retention pins 17 mm and 2 collecting bolts with 2 flange bushings 8x12/16x8/2



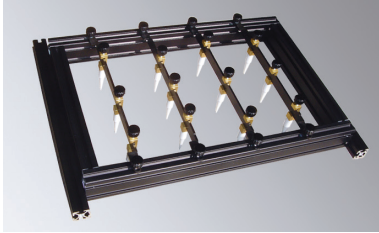
**Upper Plate SMT 105 CEM1** for fixture Type 105, overall dimensions of the plate 119x230x8 mm, for probes for unsoldered pins and/or polarity probes incl. 9 plastic retention pins 17 mm

# Accessories and Spare Parts for REINHARDT-Test Fixtures

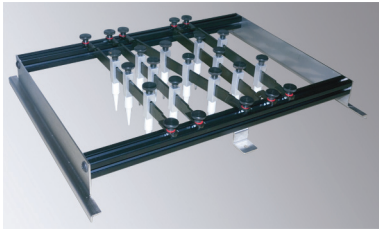


**Fixture Exchange Plate Brace 343** for universal exchange plate with overall dimensions 380x297x8mm, incl. 4 hexagonal head bolts M4x30 and 4 oval head screws with cross recess, L: 343 mm, H: 30 mm, T: 6 mm

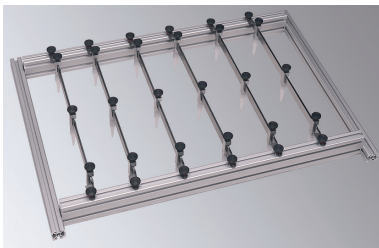
**Fixture Exchange Plate Brace 453** for universal exchange plate with overall dimensions 500x400x8mm, incl. 5 hexagonal head bolts M4x30 and 5 oval head screws with cross recess, L: ca. 453 mm, H: 30 mm, T: 6 mm



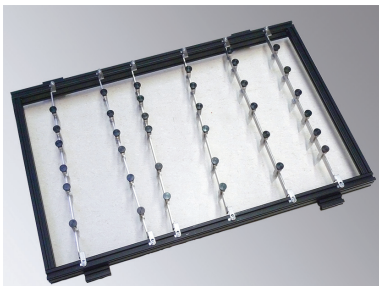
**Retention Exchange Box 4-3** (black) with 5 longitudinal arms and knurled screws and 15 bow retention devices and knurled screws for fixtures Type 40A V2.0, 42A V2.0 and Type 45A V2.0, overall dimensions 420x299 mm



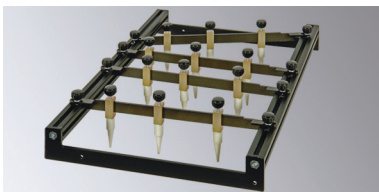
**Retention Exchange Box 42A-3** (black) with 5 longitudinal arms and knurled screws and 15 bow retention devices and knurled screws for fixtures Type 42A-3 and Type 62-3, overall dimensions 420x299 mm



**Retention Exchange Box 82** with 6 longitudinal arms with knurled screws and 18 bow retention pins with knurled screws, overall dimensions 541.5x402 mm, for Type 82B and Type 82C  
for easily adjusting the retention pin positions from above

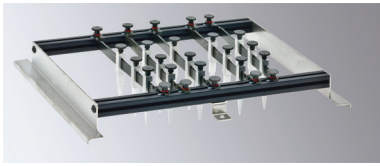


**Retention Exchange Box 6** with 6 longitudinal arms and 36 retention pins for exchange plate fixture Type 52 and Type 52L



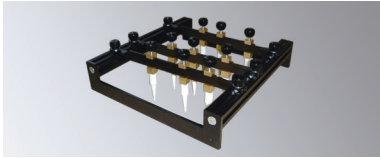
**Retention Exchange Box 145**  
Retention exchange box with 5 longitudinal arms and 15 retention devices for fixture 145A-2 and 145B-2  
for easily adjusting the retention pin positions from above

# Accessories and Spare Parts for REINHARDT-Test Fixtures



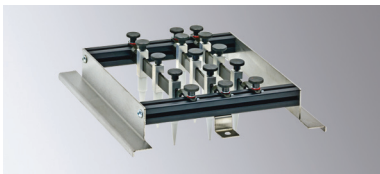
## **Retention Exchange Box 147**

Retention exchange box with 5 longitudinal arms and 15 retention devices for fixture Type 147  
for easily adjusting the retention pin positions from above



**Retention Exchange Box 125** Retention exchange box with 4 longitudinal arms and 12 retention pins for fixture 125B-2, 125A-2 and 125H; for easily adjusting the retention pin positions from above

**Retention Exchange Box 105** Retention exchange box with 3 longitudinal arms and 9 retention devices for fixture 105B-2 and 105A-2; for easily adjusting the retention pin positions from above (**without picture**)



## **Retention Exchange Box 127**

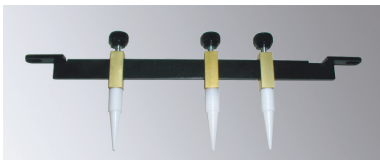
Retention exchange box with 4 longitudinal arms and 12 retention devices for fixture Type 127, Type 125HV, ATS-UKMFT 625 (4 linear guidings)  
for easily adjusting the retention pin positions from above



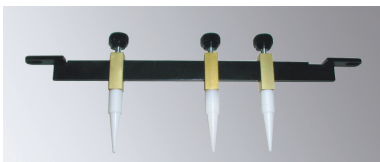
**Receiver Angle 4-3** Receiver angle for retention device incl. 3 retention pins with knurled screws and 2 slot nuts M4, **255 mm long**, can be built into the retention exchange box 4-3 and into the retention exchange box 4-2. The receiver angle can be set at an angle of up to 20° for easily adjusting the retention pin positions and the receiver profile from above. For fixtures Type 40A, 42A, 145, 147 and 242



**Receiver Angle 82** Receiver angle incl. 3 retention pins with knurled screws and 2 slot nuts M4, **355 mm long**, can be built into the retention exchange box 82. The receiver angle can be set at an angle of up to 20° for easily adjusting the retention pin positions and the receiver profile from above. For fixture Type 82C



**Receiver Angle 105-125** Receiver angle incl. 3 retention pins with knurled screws and 2 slot nuts M4, **206 mm long**, can be built into the retention exchange box 105B-2, 105A-2, 125B-2, 125A-2 and 125H. The receiver angle can be set at an angle of up to 20° for easily adjusting the retention pin positions and the receiver profile from above.



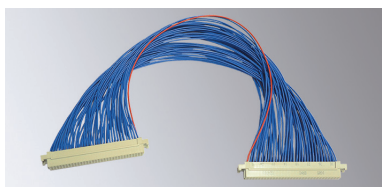
**Receiver Angle 125HV-127-627** Receiver angle incl. 3 retention pins with knurled screws and 2 slot nuts M4, **184 mm long**, can be built into the retention exchange box 125HV, 127 and ATS-UKMFT 625 (4 linear guidings). The receiver angle can be set at an angle of up to 20° for easily adjusting the retention pin positions and the receiver profile from above.



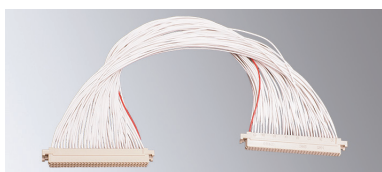
# Accessories and Spare Parts for REINHARDT-Test Fixtures



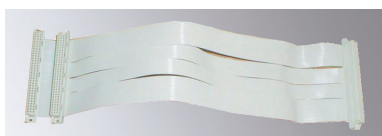
**64way Universal Fixture Cable T1** (flat ribbon cable AWG28 about 38 cm long, with two insulation displacement sockets and one fixture interface connector (male connector DIN 41612, type R with protective board (Press\_Pla), completely confectioned and tested) for REINHARDT-test fixtures



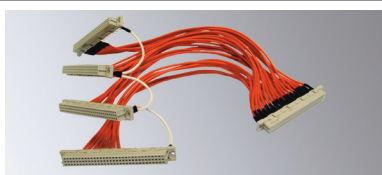
**64way Universal Fixture Cable T1 Crimp** with two 64way female connectors with AWG22-crimp cable, about 38 cm long and one fixture interface connector (male connector DIN 41612, type R with protective board (Press\_Pla), completely confectioned and tested) for REINHARDT-test fixtures



**96way Universal Fixture Cable T1 Crimp** with two 96way female connectors with AWG22-crimp cable, about 38 cm long, and one fixture interface connector (male connector DIN 41612, type R with protective board (Press\_Pla), completely confectioned and tested) for REINHARDT-test fixtures



**64way Universal Fixture Cable T2** (64way flat ribbon cable AWG28 with three insulation displacement sockets and 2 fixture interface connectors (male connector DIN 41612, type R with protective board (Press\_Pla), completely confectioned and tested) for REINHARDT-test fixtures



**Fixture Cable V4** for connecting 1–4 VMX8 high voltage measuring matrix boards in the test fixtures, A-series, e.g. Type 40A, Type 42A/C, Type 82  
Up to 4 high voltage measuring matrix boards are led to one connector for the exchange plate



**Fixture Cable V2** Adapterkabel V2 for connecting 1–2 VMX8 high voltage measuring matrix boards in the test fixtures, A-series, e.g. Type 40A, Type 42A/C, Type 82  
Up to 2 high voltage measuring matrix boards are led to one connector for the exchange plate



**Fixture Cable LMX670** Fixture cable LMX670-4 for connecting a LMX670-4 or LMX670-8 power matrix boards in REINHARDT test fixtures  
for ATS-KMFT 670 and ATS-MFT 770

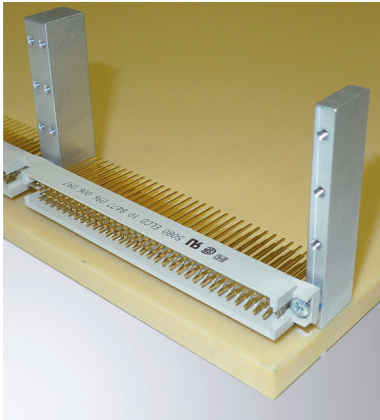


**Fixture Cable HSM** f for connecting a HSM high voltage-stimulus matrix in the test fixtures, A-series, e.g. Type 40A, Type 42A, Type 145A  
for ATS-KMFT 670 and ATS-MFT 770



**Fixture Cable AC670** Fixture cable AC670 for connecting an AC470 or AC670-board in the REINHARDT-test fixture  
for ATS-KMFT 670 and ATS-MFT 770

# Accessories and Spare Parts for REINHARDT-Test Fixtures



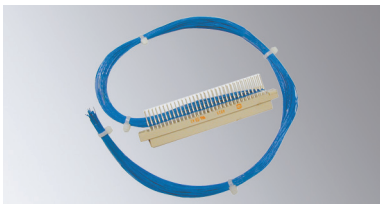
**Connector Fastener Block Vers. 2 Outside (narrow) – Set (2 pcs)** for mounting up to 4 rows incl. 8 filister-head screws (cross notch) M2.5 x 8 mm incl. screwlock which fix the connectors at the fastener block and 2 filister-head screws M2.5 x 14 mm DIN 7985 incl. washer M4 DIN 125 which fix the block on the exchange plate

for mounting 64- or 96way male multipoint connectors Type R



**Connector fastener block Vers. 2 inside (wide) – Set (3 pieces)** for mounting up to 4 rows incl. 24 filister-head screws (cross notch) M2.5 x 8 mm incl. screwlock which fix the connectors at the fastener block and 3 filister-head screws (cross notch) M4 x 14 mm DIN 7985 incl. washer M4 DIN 125 which fix the block on the exchange plate

for mounting 64- or 96way male multipoint connectors Type R

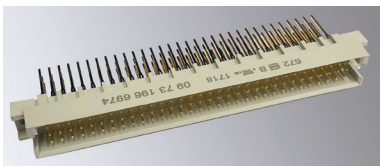


**Female Connector 96 Wrap** – 96way female multipoint connector with wrapped cables AWG 30, ca. 400 mm long.

This female connector is plugged onto the male connector 96 of the Universal exchange plate and reduces your work on the wiring between device under test and fixture.



**Male Connector 96 Gilded C** 96way male connector, wire wrap, type C (cross-drilled), gilded on both mating areas, for the interface of the universal fixture (towards test system) for fixtures type 40A, 42A and 62L – until 06/2016



**Male Connector 96 gold R** 96way male connector, wire wrap, type R (face drilled), gilded on both mating areas, for universal fixture interface (towards test system, from 5/2016) and for ranging and interface box, also for the exchange plate of the universal fixture, from 11/2012 with connector fastener block Vers. 2

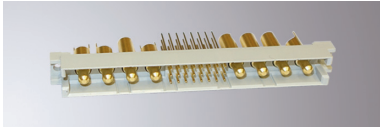


**Female Connector 96 gilded C** 96way female connector, wire wrap, type C (face drilled), gilded, also wire wrap post, for the test system interface

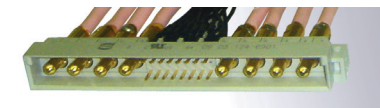
# Accessories and Spare Parts for REINHARDT-Test Fixtures



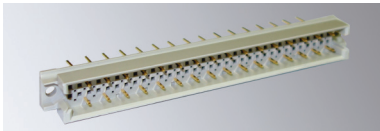
**High Current Contact Socket** – female connector type C (face drilled) with 8 high current contact sockets and 24 contacts e.g. for mounting on the REINHARDT-LMX670 board (test system side)



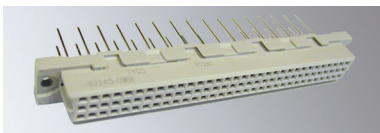
**High Current Pin Contact** – male connector Type R (cross drilled) with 8 high current pin contacts and 24 contact pins for mounting on the exchange plate and on the REINHARDT-test fixture (to the test system side) e.g. fixture Type 40 or 42 from 5/2016, e.g. for connecting the LMX670 board



**High Current Pin Contact** – male connector Type C (cross drilled) with 8 high current pin contacts and 24 contact pins for mounting on the test fixture e.g. fixture Type 40A/B, Type 42A/B until 5/2016 (not exchange plate), is required when the LMX board is used



**HV-Connector 32 R** 32way high voltage connector, type R (face drilled), for universal exchange plate and fixture interface to test system, Type 40A, Type 42A from 5/2016, Type 82B and Type 82C



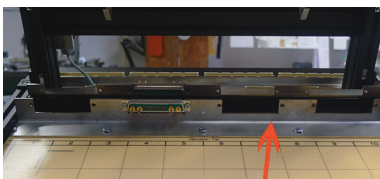
**HV-Socket 32** 32way high voltage socket, type C (face-drilled) for the universal exchange plate interface in the test fixture, e.g. Type 40A/B, Type 42A/B, Type 145A



**Cable Socket CA 6LD** straight 6 contacts + PE (total 7 contacts), female, max. 250 V, max. 10 A  
for housing of fixture Type 40A, 42A-2, 42A-3 from 5/2016, Type 82B and 82C



**Connector 10** 10way power connector (picture incl. optional **Cover for 10way Connector**)

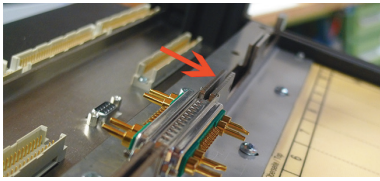


**Fixing angle Power SUB-D Exchange Plate**, holds up to 4 pcs 37pol. SUB-D connector housings (without connector), incl. 3 screws M4x16 and 2 screws M2.5x16

mounted to fixtures Type 42A Vers. 2.0, Type 42C, Type 40A and Type 82B/C



# Accessories and Spare Parts for REINHARDT-Test Fixtures

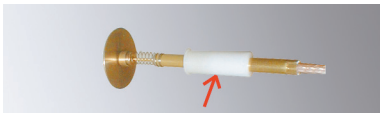


**Fixing angle for P-SUB ADA/Fixture** holds up to holds up to 4 pcs 37pol. SUB-D connector housings (without connector), incl. fixing material such as slot nut and screws

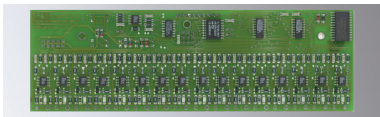
mounted to fixtures Type 42A Vers. 2.0, Type 42C, Type 40A and Type 82B/C



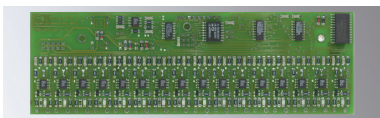
**Probe for SMT Solder Defect or Polarity Test**, diameter 2.4, 5, 7, 10, 13, 20, 30 mm (Please indicate the requested diameter when you order) incl. NF cable



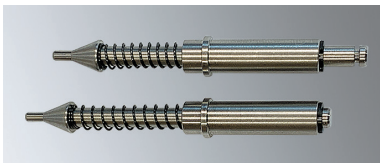
**Spacing Piece** for fixing the distance of the probe for SMT solder defect test and polarity test



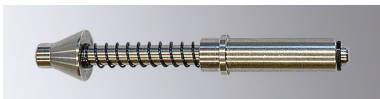
**Board Polarity** –Board with 16 channels for discerning polarity of capacitors, without cabling



**Board 16 Channels for SMT Solder Defect Test**



**Reference Pin 3 – Set (5 pcs)** spring suspended, for collector drillings from 1.7 to 4.7 mm, diameter of the plate drilling 5 mm, tolerance +0.0/-0.05 mm; spring travel can be set in two levels via retaining washer for shafts DIN 6799

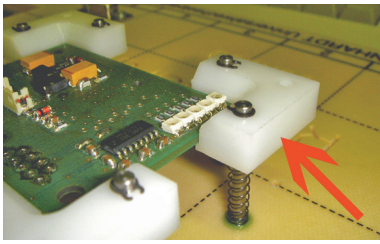


**Reference Pin 4 – Set (5 pcs)** spring suspended, for collector drillings from 4.4 to 7.7 mm, diameter of the plate drilling 5 mm, tolerance +0.0/-0.05 mm; spring travel can be set in two levels via retaining washer for shafts DIN 6799

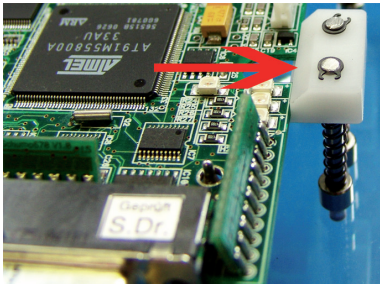


**Guiding Angle – Set (5 pcs)** for placing the board easily in the fixture, incl. 10 screws M3x6 mm

# Accessories and Spare Parts for REINHARDT-Test Fixtures



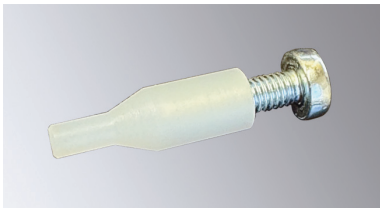
**Guiding Edge** spring-suspended, for the outer edges of the PCB, for centring and guiding the board



**Guiding Brink**, spring-suspended, for straight outer contours of PCBs for centring and guiding the board



**Plastic Retention Screws** M4 x 40 white, nut M4, set of 10 pieces



**Plastic Retention Pin 15.5** plastic retention pin 15.5 mm long, incl. fixing screw M3 x 12, set of 10 pieces

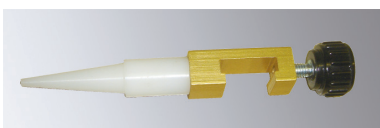
**Plastic Retention Pin 17** plastic retention pin 17 mm long, incl. fixing screw M3 x 12, set of 10 pieces

**Plastic Retention Pin 18.5** plastic retention pin 18.5 mm long, incl. fixing screw M3 x 12, set of 10 pieces

**Plastic Retention Pin 20** plastic retention pin 20 mm long, incl. fixing screw M3 x 12, set of 10 pieces

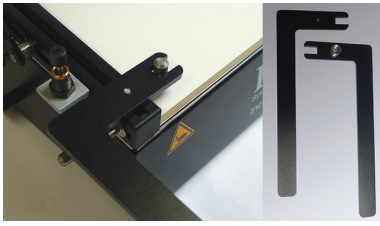
**Plastic Retention Pin 26** plastic retention pin 26 mm long, incl. fixing screw M3 x 12, set of 10 pieces

**Plastic Retention Pin 28** plastic retention pin 28 mm long, incl. fixing screw M3 x 12, set of 10 pieces

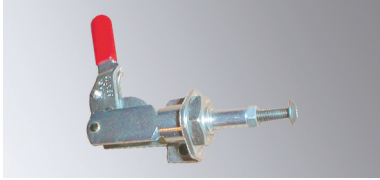


**Bow Retention Pin 45 – Set (5 pcs)** with 45 mm long plastics retention pin, complete with knurled head screw, for fixture types 40A, 42A, 42C, 45A, 62C, 62L, 82B/C, 105A/B-2, 125A/B-2,H; 127, 145A/B-2, 147

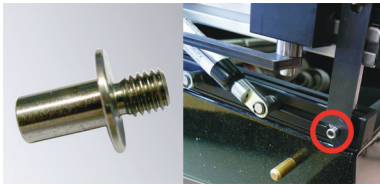
# Accessories and Spare Parts for REINHARDT-Test Fixtures



**Set of Changers Lightweight** (t=4) for changing the exchange plates more comfortably



**Grip for Push Rod – Set (2 pcs)** – grip for push rod size 1 (reinforced) incl. screws for fixing for REINHARDT-fixtures



**Screw M5 – Set (2 pcs)**, total length 17 mm, with lateral Allen screw, interior Allen wrench 3 mm, incl. slot nut M5, for locking fixture Type 105, Type 125, Type 127, Type 145, Type 147, Type 40A, Type 42A, Type 46D, Type 62C, Type 62L and Type 82B/C

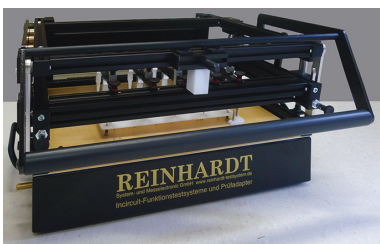


**Closing Clasp – Set (2 pcs) for Type 42A-2, Type 40, Type 62 and Type 82**, total length ca. 149 mm, without securing material

**Closing Clasp – Set (2 pcs) for Type 42A-3**, total length ca. 109 mm, without securing material

**Closing Clasp – Set (2 pcs) for Type 52**, without securing material

**Closing Clasp – Set (2 pcs) for Type 147 and Type 127**, total length ca. 129 mm, without securing material



**Add-on Kit for Contacting from below and above** for fixture Type 42A incl. securing material

Note: only for fixtures with an operating lever which is tapered at the front

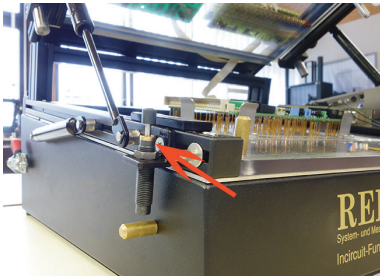


# Accessories and Spare Parts for REINHARDT-Test Fixtures



**Safety Lock** – device for fixture type 42A-2, type 42A-3, type 127 and type 147, electromagnetic operation, 12V DC,  $\pm 20\%$ , max. 450mA, incl. mounting plate and securing material

prevents unintentional or unauthorised opening of the fixture and avoids possible risks of injuries, when voltages are applied to the DUT or the destruction of the DUT, when the fixture is opened during the test procedure

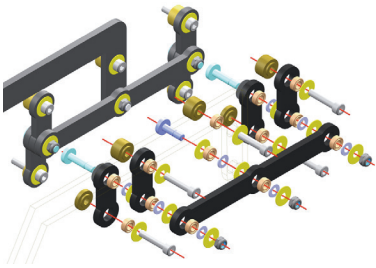


## **Set of Shock Absorbers Type 42 Retrofit Kit**

Set of shock absorbers – powerstop for softened closing of the fixture for fixture Type 40, 42A-2, 42A-3, 62, 82B and 82C incl. fixing angles and screws with slot nuts

## **Set of Shock Absorbers Type 147 Retrofit Kit**

Set of shock absorbers – powerstop for softened closing of the fixture for Fixture Type 127 and Type 147 incl. fixing angles and screws with slot nuts



**Conversion Kit For Ball Bearings Pivots Type 42-62 KH** for fixture Types 42A, 62L, short lever, consists of 1 set of turned parts (62 components) and 26 ball bearings 10/5/4

# Accessories and Spare Parts for REINHARDT-Test Fixtures

---

**Gas Strut 50N No. 082406 – Set (2 pcs)**

LA 227 mm, wearing part for fixture Type 105B, 125B, 145B

**Gas Strut 50N No. 082473 – Set (2 pcs)**

LA 265 mm, wearing part for fixture Type 25A, 43A and 45A (top)

**Gas Strut 50N No. 192848 – Set (2 pcs)**

LA 186 mm, wearing part among others for fixtures type 127 and type 147 (top)

**Gas Strut 75N No. 362883 – Set (2 pcs)**

LA 186 mm, wearing part for fixture Type 147



**Gas Strut 75N No. 244945 – Set (2 pcs)**

LA 265 mm, wearing part for fixture Type 42A3 (top)

**Gas Strut 100N No. 082414 – Set (2 pcs)**

LA 227 mm, wearing part for fixture Type 40, Type 42, Type 40A and Type 42A

**Gas Strut 150N No. 082422 – Set (2 pcs)**

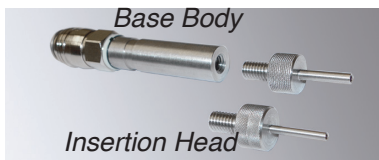
LA 227 mm, optional reinforcement for increased load, for exchange plate fixture Type 40A and Type 42A

**Gas Strut 100N No. 082570 – Set (2 pcs)**

LA 306 mm, wearing part for fixture Type 45A (bottom) and Type 52

---

**Base Body for Insertion Head 100mil or 75 mil** for AAE-CNC2 Fixture Production System



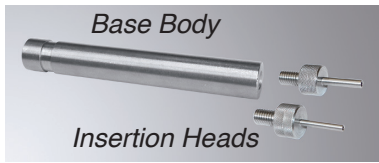
**Insertion Head 100mil** without base body, for manually pressing in spring contact pins, for Equipment 2.0 for manually pressing in spring contact pins and for Fixture Production System AAE-CNC 2

**Insertion Head 75 mil** without base body, for manually pressing in spring contact pins and for Fixture Production System AAE-CNC 2

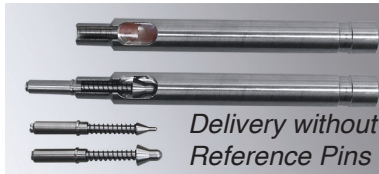
**Universal Insertion Head** without base body, manual, for receptacles only

---

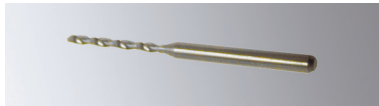
# Accessories and Spare Parts for REINHARDT-Test Fixtures



**Base body for Insertion Head 100mil bzw. 75mil**, for manually pressing in spring contact pins, for Equipment 2.0 for manually pressing in spring contact pins



**Manual Tool**, outer diameter 12 mm, for pressing in reference pins 3 and 4, also for use with XYZ Equipment for manually pressing in spring contact pins, vers. 2.0 (with delimiter groove for this equipment)



**Drill, 46 mm** total length, Ø 1.70 mm, 1/8"-shaft, for drilling holes for additional spring contact pins Ingun 100mil with our system for building fixtures at a later time (The pins are placed manually).

**Drill, 46 mm** total length, Ø 1.75 mm, 1/8"-shaft, for drilling holes for additional spring contact pins IDI 100mil with our system for building fixtures at a later time (The pins are placed manually).

**Drill 1.75 1/8"** Twist drill, solid carbide drill, Ø 1.75 mm, shaft 1/8", total length ca. 38 mm, for drilling holes of 1/10"-contact pin receptacles IDI

**Drill 1.70 1/8"** Twist drill, solid carbide drill, Ø 1.70 mm, shaft 1/8", total length ca. 38 mm, for drilling holes of 1/10"-contact pin receptacles Ingun

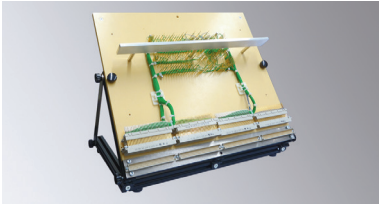
**Drill 1.33 1/8"** Twist drill, solid carbide drill, Ø 1.33 mm, shaft 1/8", total length ca. 38 mm, for drilling holes of 75mil-contact pin receptacles Ingun

**Drill 1,0 1/8"** Twist drill, solid carbide drill, Ø 1.0 mm, shaft 1/8", total length ca. 38 mm, for drilling of 50mil-contact receptacles Ingun

**Drill 5.0 1/8"** VHM-drill sold carbide drill, Ø 5.0 mm, shaft 1/8", total length ca. 38 mm, for drilling holes of e.g. reference pin 3

**Milling cutter 3 mm** for Fixture Production System, 3mm, shaft 1/8 "

# Accessories and Spare Parts for REINHARDT-Test Fixtures



## WireWrap-Frame

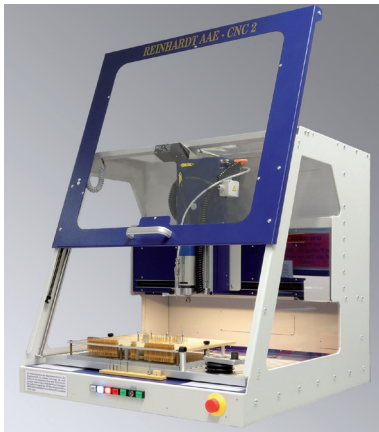
Ergonomic frame for holding the fixture plate with the overall dimensions 380 x 297 x 8 mm; protects the spring contact pins and the upper side of the fixture plate in wiring

**Exchange plate, connectors etc. are not included!**



**Test Fixture Wire Finder TFWF 96** for individual fixture wiring, in case you have to duplicate a fixturing or want to use already existing test point designations for the RMX-measuring matrix channels. In this case you have to wire the contact pins to certain RMX-channels and wire both ends of the wrap-connection to the correct positions: The cable of a RMX-measuring matrix wiring is touched with the search probe and the respective RMX-channel is shown on the display.

For that you connect the TFWF 96 Test Fixture Wire Finder to the connector of the first RMX-measuring matrix and then touch any wire end with the search probe. The resp. channel is shown on the display and you only connect the wire with the respective contact pin.



## AAE-CNC 2 Semi-automatic Fixture Production System

CNC-drilling center (desk-top unit, travel x: 395 mm, y: 300 mm, usable placing area x: 395 mm, y: 244 mm; repeat accuracy 20  $\mu$ m; drilling machine, hard- and software for controlling the CNC-machine, device for automatic picking and placing of the receptacles and spring contact pins, drills, clamping device for the bed-of-nails plate/exchange plate of the fixture), security switch, wiring, magazine (100 mil crown, 100 mil tip and 75 mil tip) for 625 receptacles incl. spring contact pins, dust hood, suction device (without vacuum-cleaner).

For building fixtures you need the software for taking over Gerber data.

unsuitable for the exchange plates of fixture types 52 and 82

**Underframe for AAE-CNC 2 Semi-automatic Fixture Production System** incl. 4 bases adjustable in height, about 770 mm wide, 835 mm deep, 805 mm high